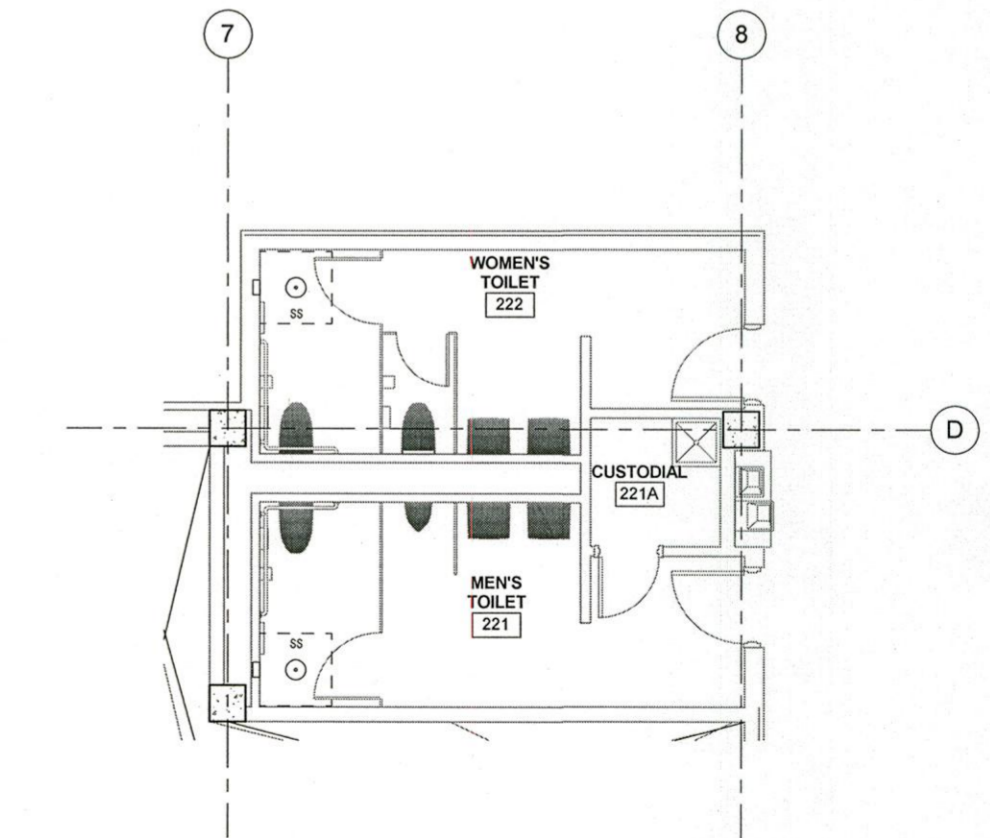


- GENERAL SHEET NOTES:**
- SEE QL-501 AND QL-502 FOR FIXED AND MOBILE CASEWORK DETAILS.
 - SEE QL-503 FOR MOBILE TABLE AND TYPICAL ADJUSTABLE SHELVING DETAILS.
 - SEE QL-504 FOR CONTROLLED ENVIRONMENT ROOM DETAILS.
 - SEE QL-504 FOR TYPICAL SNORKEL, CYLINDER RESTRAINT AND DRYING RACK DETAILS.
 - SEE QL-505 FOR TYPICAL OVERHEAD SUPPORTED SERVICE RACKS.
 - SEE QL-506 FOR TYPICAL SERVICE SUPPORT POLE DETAILS AND CONFIGURATIONS.

1 LEVEL 2 - Enlarged Floor Plan - Life/Neuro Electrophysiology
1/4" = 1'-0"

Philip Washburne
PHILIP WASHBURN
5-26-2010

Mike Wehr
mike wehr
5-26-2010



2 LEVEL 2 - Public Toilets
1/4" = 1'-0"

ARCHITECT
HDR
HDR Architecture, Inc.
101 SW 5TH AVE, SUITE 1900
PORTLAND, OR 97204

THA
ARCHITECTURE
733 SW OAK STREET, SUITE 100
PORTLAND, OR 97205

CONSULTANT

STAMP

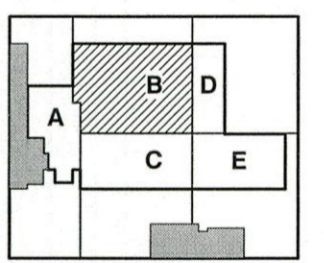
NOT FOR CONSTRUCTION

APPROVALS

REVISION NO.

DATE

KEY PLAN - (NTS)



PLAN NORTH

UO LIB

University of Oregon
1276 University of Oregon
Eugene, Oregon

ISSUANCE
Final User Review for Lab Content

HDR PROJECT NUMBER 108803 THA PROJECT NUMBER 0810

DATE
MAY 25-26, 2010

SCALE
As indicated

DRAWN BY
KMK

DRAWING TITLE
Laboratory Equipment Level 2 - BBMI - Life/Neuro Electrophysiology

SHEET NUMBER

QL-102